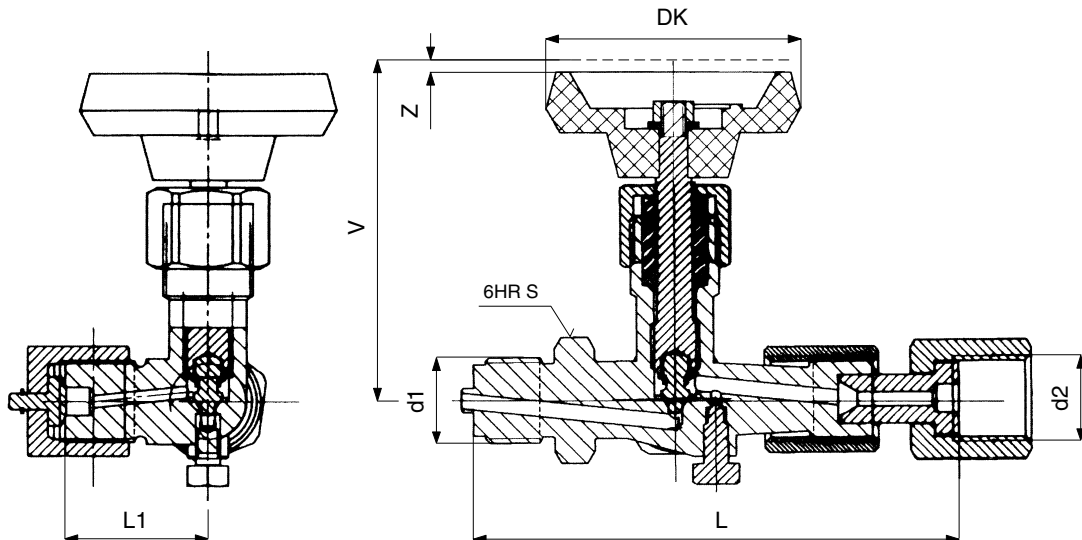


TESTING PRESSURE GAUGE VALVE FORM B
**PN 400
(PN 250)**

Connecting and construction dimensions

| d1 | d2 | L | L1 | V | Z | S | DK | kg | Order No. |
|----------|-------|-----|----|----|---|----|----|------|-----------|
| G 1/2 .5 | G 1/2 | 120 | 35 | 85 | 5 | 27 | 63 | 0,90 | 111 0722 |
| G 1/2 .2 | G 1/2 | 120 | 35 | 85 | 5 | 27 | 63 | 0,90 | 111 0726 |
| G 1/2 .3 | G 1/2 | 120 | 35 | 85 | 5 | 27 | 63 | 0,90 | 111 0700 |

Use

To connect the pressure gauge and the testing pressure gauge with a flat sealing. The valve is not fit for regulation. It is used for water, steam and air for:

| Maximum working | | Material design |
|-----------------|------------------|----------------------------|
| temperature °C | overpressure MPa | |
| 120 | 25 | brass .5 |
| 120 | 40 | structural carbon steel .2 |
| 120 | 40 | stainless aust. steel .3 |

The valve may also be used for other non-aggressive media, if consulted with and approved by the manufacturer.

Material

| | |
|------------|---|
| body | brass, possibly another material given in the table |
| spindle | stainless steel |
| sealing | asbestos-free |
| hand wheel | plastic material |

Testing

Testing in accordance with ČSN 13 3060, part 2, or possibly DIN 3230, part 3.

Control

With hand wheel.

Mounting

The valve may be mounted in any position.

Connection

With pin and sleeve connection.

Placing an order
Data necessary to place an order:

- nominal pressure (PN)
- working medium
- actual max. working temperature of medium [°C]
- actual max. working overpressure [MPa]